

自動化輸送設備

FACTORY AUTOMATION
CONVEYOR SYSTEM



喬豐行股份有限公司
Chiao Fong Hang Co., Ltd.

簡介

Page 1

INTRODUCTION

01

雙軌式動力與無動力輸送系統

Page 3

POWER & FREE SYSTEM

02

自流式輸送系統

Page 5

FREE FLOW CONVEYOR SYSTEM

03

裙板式輸送機

Page 6

APRON CONVEYOR SYSTEM

04

組立線輸送系統

CONVEYOR SYSTEM FOR ASSEMBLY LINE

Page 7

06

裝箱、裝櫃輸送系統

PACKAGING AND CONTAINER LOADING
CONVEYOR SYSTEM

Page 9

07

往復機 噴塗應用

AUTO-SPRAY MACHINE

Page 11

08

其它各種輸送設備

THE OTHER CONVEYOR SYSTEMS

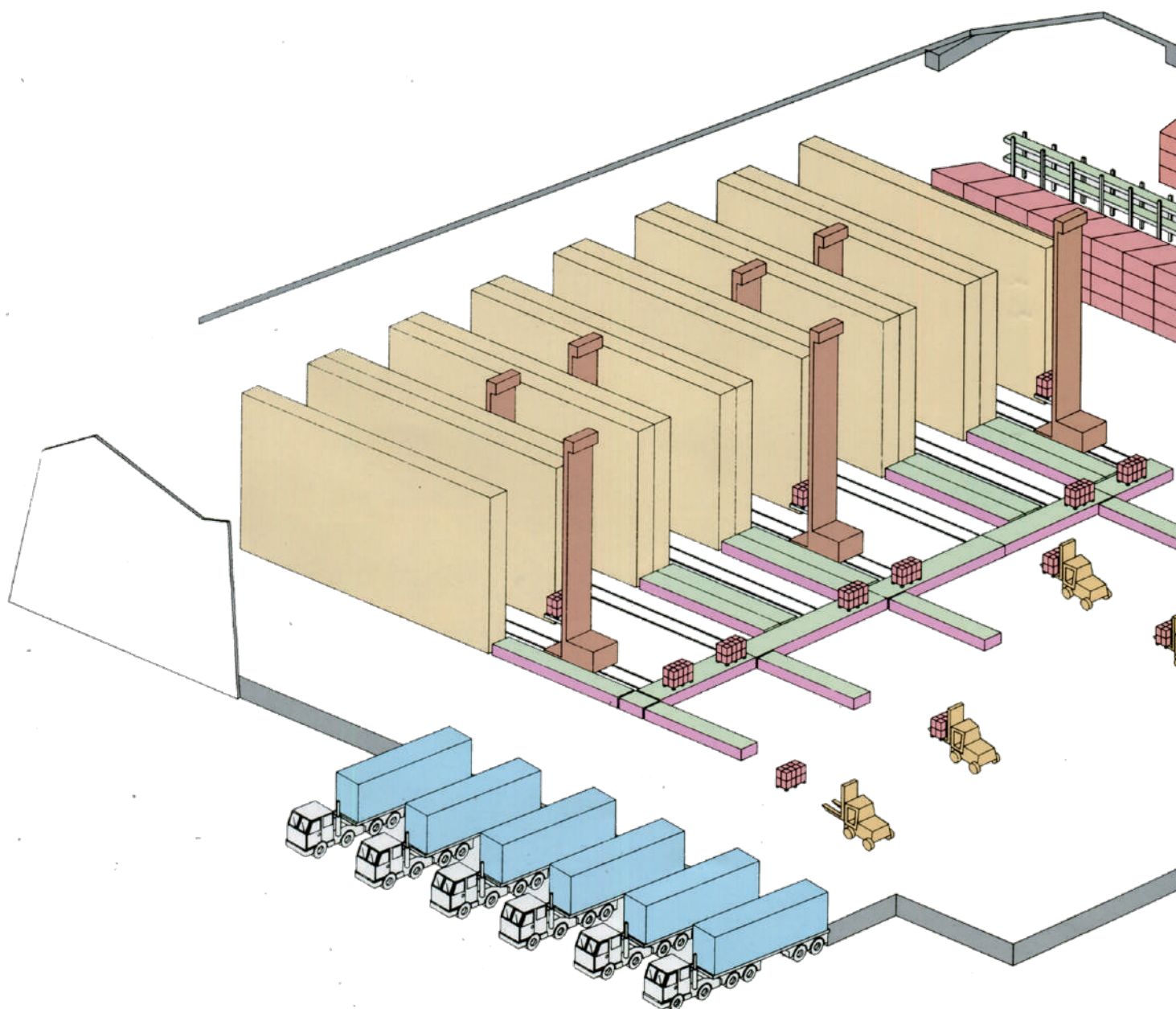
Page 12

卓越的技術背景 顯赫的工程實績

Superior Technological Background, Extensive Engineering Achievement

本著一貫鉅細靡遺的傳統精神，從工程分析，規劃設計製造，安裝試車，及售後服務等，務必力求每一個細節的完美無缺。

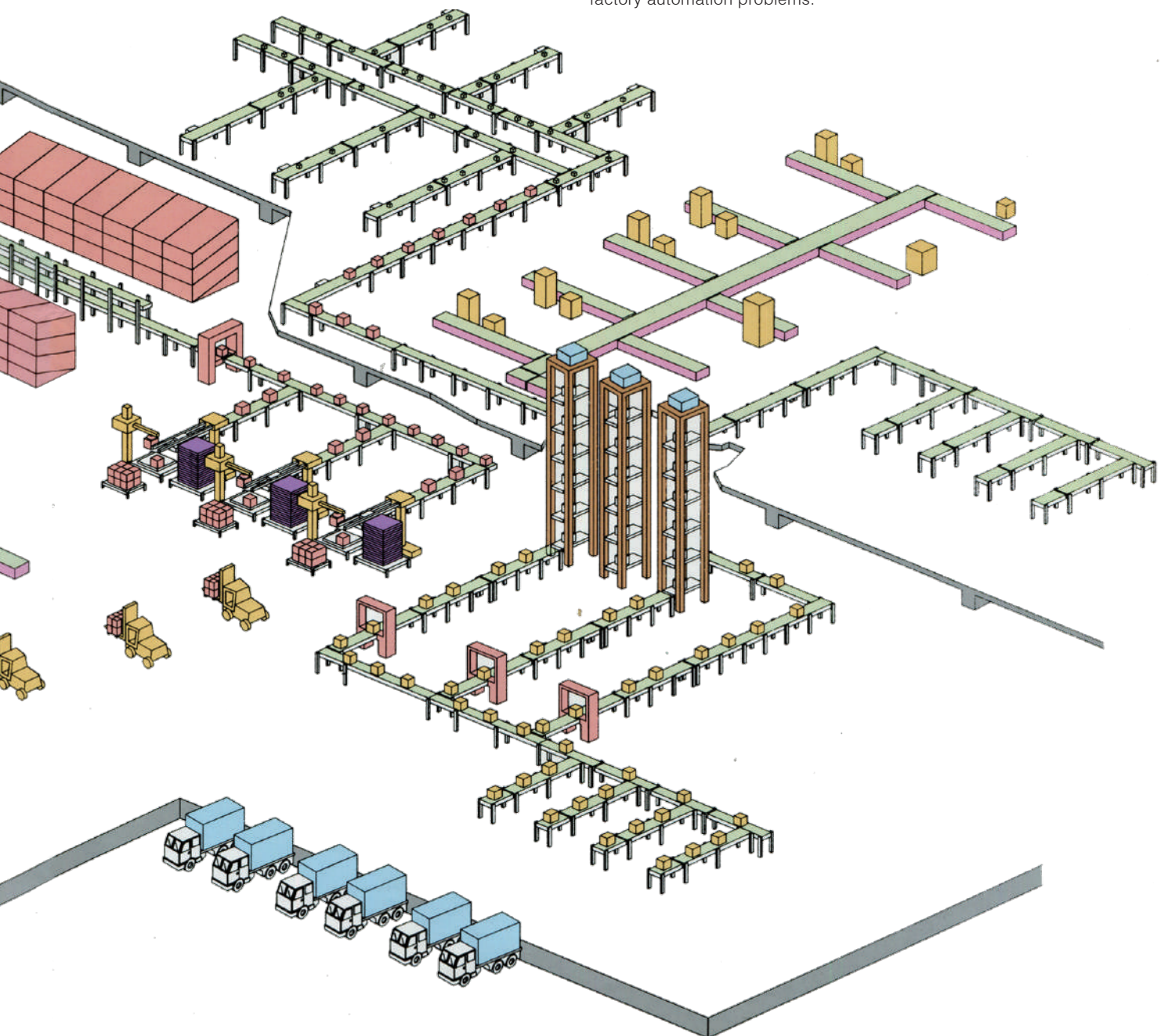
With the tradition of attention to every detail, from project analysis, planning, design and manufacture, installation and operations testing to technical support, we require everything to meet standards of perfection.



喬豐行股份有限公司自創立以來，矢志追求自動化科技的至高境界。我們的工程部工程師群秉持60餘年來的工程規劃，安裝實務歷練及優異的理論基礎已為國內外不同行業領域的自動化系統，樹立顯赫的工程安裝實績：如汽機車業、重電業、化學業、塗裝、食品...等製造產業。每一條輸送系統，無一不是徹底反應喬豐行卓越特殊的自動化之工程能力。

喬豐行為不斷提昇其技術層次，更與日本大同工業株式會社及英國L.B.Foster Rail Technologies(UK) Ltd., 技術合作，並重資禮聘外籍顧問，藉著不斷的技術交流，追求世界級自動化技術。喬豐行的專業歷練及嶄新的技術服務理念無缺的將為您提供，您所企盼的自動化作業整體體系的答案。

Since its establishment, CHIAO FONG HANG CO., LTD. has dedicated itself to pursuing the highest level of automation technology. For over 60 years, our engineering staff, combining their extensive experience in engineering, planning and installation, has created a fine reputation for a wide variety of industrial automation and unmanned operations. Our engineering records include projects in the heavy electric, chemical, coating, foodstuff, automotive and motorcycle industries. Each conveyor system fully reflects the outstanding engineering capability of CHIAO FONG HANG. No matter what type of conveyor system, for small parts, or automotive and motorcycle parts, CHIAO FONG HANG's conveyor systems will provide you with the most competitive edge. In order to continuously upgrade its level of automation technology, CHIAO FONG HANG has a technological cooperation agreement with Japan's DAIDO company, and L.B.Foster Rail Technologies(UK) Ltd., U.K. to achieve world class automation technology. Our expertise and all-new technical support concept will give you the perfect solution to all your factory automation problems.



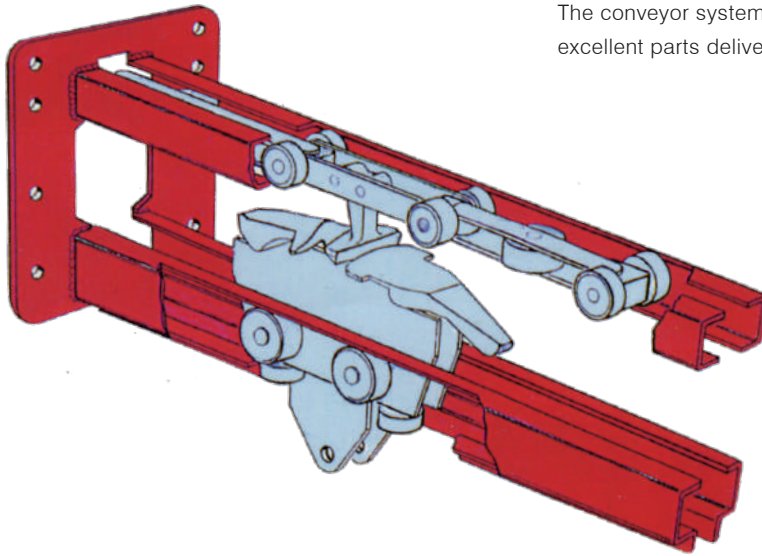
雙軌式動力與無動力輸送系統

Power & Free System

物料儲存及供料輸送系統 *Material Storage & transportation System*

喬豐行運用嶄新理念設計安裝的架空式，空中倉儲，供料輸送系統，徹底運用廠房空中空間，展現喬豐行在儲存供料系統的卓越成就。零件加工完畢，輸送至空中倉儲，並自動分區儲存，庫存的零件可由電腦控制站監控，可任意叫料、送料。達成無人化的庫存管制及供料輸送作業。

Based on a brilliant engineering background, combined with the latest design concepts, CHIAO FONG HANG has successfully designed and built an overhead, upstairs parts storage and conveyor system. This all-new conveyor system provides full utilization of a factory's upper space, and efficient parts supply to the assembly line. After being machined, the parts are automatically delivered to the upstairs warehouse, where they can be stocked in specific areas. Parts in stock are computer controlled for supplying and selection as needed. The conveyor system provides unmanned stock control and excellent parts delivery performance.



Power And Free Conveyors

優異特性

1. 空吊架可傾斜並排儲存，節省空間。
2. 每支吊架可承受50-250公斤之荷重。
3. 昇降機可垂直昇降物品，佔用空間小。
4. 分叉軌道，可將零件輸送至不同區域或將不同區域之零件匯集。
5. 可作長距離輸送，抗疲勞強度優異。
6. 運行中可隨工作站之要求，做不同點之停留，而不影響全線之運轉。

OUTSTANDING FEATURES

1. The empty carrier can be tilted for double row storage, greatly saving space.
2. Maximum loading capacity on each carrier is 50-250 kg.
3. Parts can be vertically lowered by a dip unit for added space saving.
4. The track switch allows the parts to be delivered to different area. Also, parts in various areas can be collected together.
5. Ideal for long distance delivery. Superior anti-fatigue performance.
6. It can stop at any workstation as desired, without affecting the running of the rest of the production line.

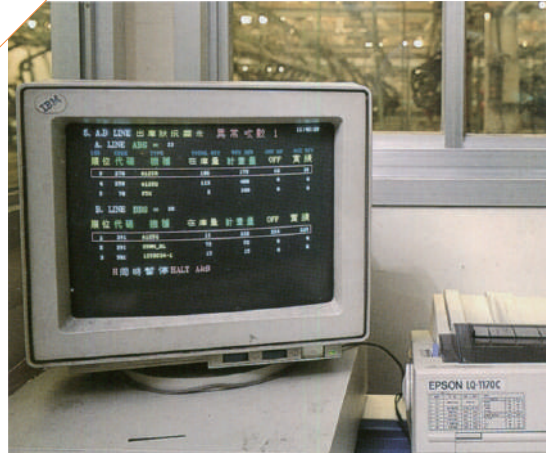
中央電腦控制站

此多功能電腦，可提供叫料，選料隨心所欲。

各種零件庫存數量，計劃生產量的正確管制。

COMPUTER CONTROL STATION

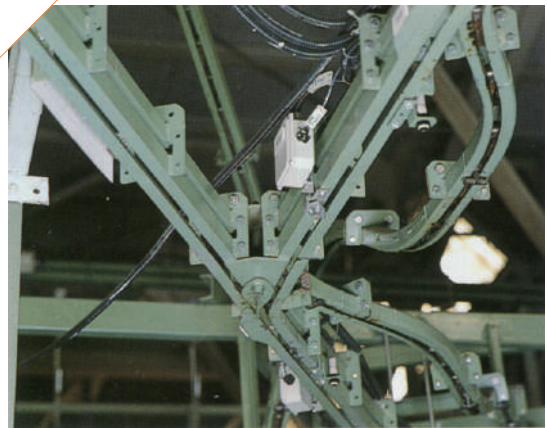
This powerful computer provides part supply and selection as needed. Stock and quantity for any part is precisely controlled.



分叉軌道提供零件輸送至不同區域，並可由不同區域匯集。

The track switch allows the parts to be delivered to different lines.

Also part in various areas can be collected together.



雙軌式輸送機可垂直昇降，配送物品佔用空間小。

Employed with a double rail conveyor for elevating products, greatly saving space.



儲存區 Loop Storage Ares



自流式輸送系統

Free Flow Conveyor System

測試線及裝配線輸送系統 TEST AND ASSEMBLY LINE CONVEYING SYSTEM

取代傳統單一速度的輸送帶，每一盤面均可精準地停止在各個工作站，供人員或機械手臂作業，既可確保人員安全，又可完全控制產品品質。

This conveyor system is designed to replace conventional single speed conveyor systems. Each tray accurately positions at the individual work station for operation by operator or robot, for added safety and full quality control.

優異特性

1. 可經由控制面板上選擇停止任意一盤，其它盤面仍繼續進行，不影響其它測試或裝配工作。
2. 線上滿載時，空盤自動停止待命。
3. 空盤自動分配雙線運行。
4. 停止器具緩衝裝置，可避免盤面停止時之衝擊力。
5. 施工安裝簡易，只需螺絲鎖固，無需焊接，施工期短。
6. 支架採用高強度鋁擠型，重量輕、結構受力強。
7. 輸送系統可彈性組合，拆裝快速方便。
8. 具自動潤滑裝置，永保輸送系統輸送順暢及使用壽命。
9. 此系統有鏈條式及滾輪式兩種輸送方式，可依客戶產品不同來規劃。

OUTSTANDING FEATURES

1. Stop of any pallet can be selected on the control panel, while all other trays keep running. This outstanding flow design never affects test or assembly line operation.
2. Once the production line is full, the empty tray will stop, and stand by.
3. The empty pallet enter onto the separated line automatically.
4. The tray stopper features a shock buffering function for stable tray stoppage.
5. The frames are manufactured from extruded aluminum, for less weight and high loading capacity.
6. Maximum flexibility of installation-Both installation and dismantling are fast and easy.
7. Automatic lubrication ensures extremely smooth running of the conveyor system, and long service life.
8. Choice of chain or roller conveyor to meet specific requirements.



裙板式輸送機

APRON CONVEYOR SYSTEM

此輸送系統適用於沖床加工廢料，各式機械加工廢料，鐵屑及顆粒狀，塊狀物品之輸送，兩側裙板可有效防止物品掉落，維持廠房清潔。

This apron conveyor system is suited for delivery of waste materials from punch presses, chips, and from various other equipment, as well as for the delivery of granular or grit material. Both sides of the apron are designed to prevent material from spilling out, reducing material loss and maintaining plant cleanliness.

優異特性

1. 輸送速度可無段變速。
2. 計時器控制間歇性輸送周期。
3. 運送距離較長。
4. 結構剛強，可耐重負載。
5. 攔板上可依需要配置夾具或支架做工件定位用。
6. 輸送機可為水平或傾斜輸送。
7. 攔板寬度範圍從100mm-1500mm。

OUTSTANDING FEATURES

1. Variable conveyor speed.
2. Conveyor running frequency is controlled by the timer.
3. Suited for long distance conveying.
4. Rugged construction provides high loading capacity.
5. The conveyor can be fitted with a fixture or bracket for holding the parts in place.
6. Choice of horizontal or tilting conveying.
7. Slat width ranges from 100 to 1500mm.



裙板式廢料輸送機

An application example of apron conveyor system for waste materials.



儲料筒具自動卸料功能，方便卡車載運。

The storage tauh features automatic release for convenient loading on a truck.

04

組立線輸送系統

Conveyor System for Assembly Line

採用盤式、懸吊式、擱板式輸送機

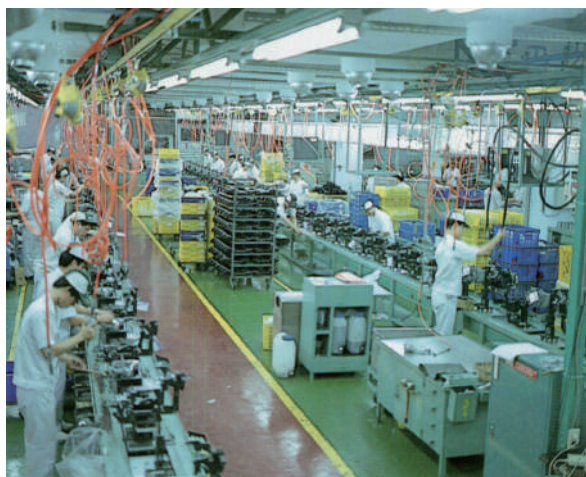
An Application Of pallet Conveyor, Trolley Conveyor and Slat Conveyor.

本公司生產之各種組立輸送線，已廣泛受國內外各大工廠使用，各種生產線可依工作需求及環境限制，作彈性的規劃、設計、提高品質及生產量。

Planned, designed and assembled by the CHIAO FONG HANG company, this chain type conveyor system has been installed in several renown factories both domestic and overseas. This conveyor system is designed and engineered for maximum flexibility. It remarkably upgrades quality levels and productivity.



擱板式組立線 Slat Conveyor



盤架式組立線 Pallet Conveyor



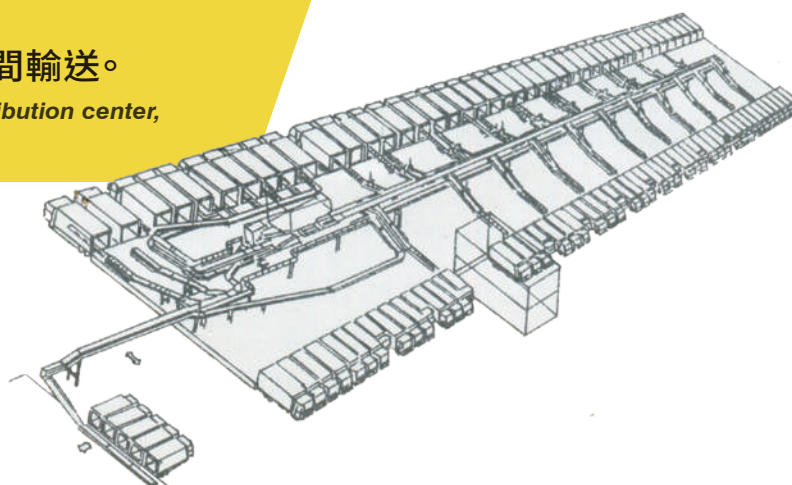
重型懸吊式組立線 Trolley Conveyor

物流輸送系統

MATERIAL HANDLING SYSTEM

適合倉庫，
配送中心及工程區間輸送。

*Suited for warehouse, distribution center,
and work station delivery.*

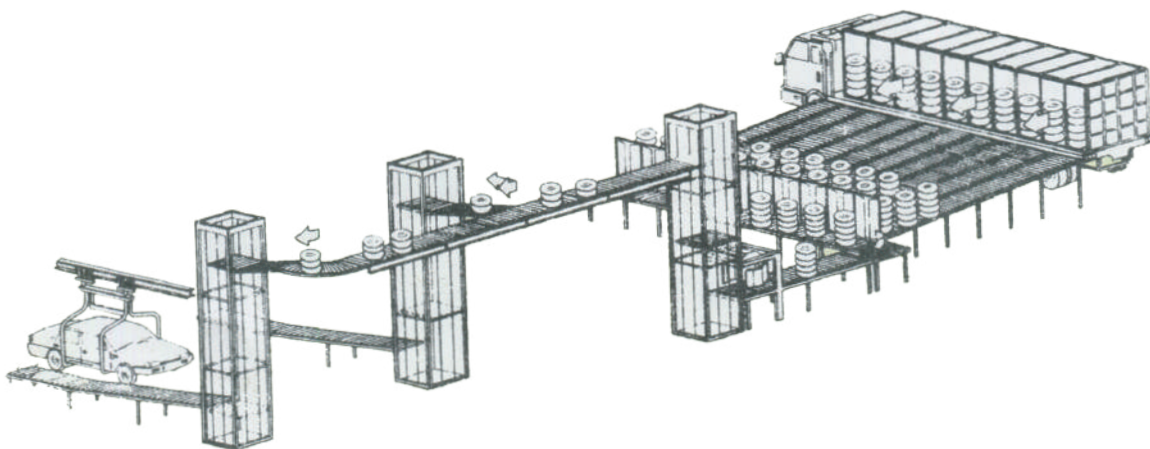


優異特性

- 1.三種驅動方式可供選擇—帶圈驅動輸送機，無壓力累積輸送機，及鏈條驅動輸送機。
- 2.用途多樣化，彈性輸送方式。
- 3.帶圈驅動輸送機具各種組合方式—直線輸送，曲型輸送，分叉或匯集輸送，轉向輸送。
- 4.帶圈驅動輸送機特性：可彈性組合，低噪音，低價位。
- 5.無壓力累積輸送機特性：可依輸送工件搭配各種配備。適合各種大小件物品輸送，具安全防護設計，結構簡化。運轉低噪音。
- 6.鏈條驅動輸送機特性：驅動力強。適合輕、重物輸送。運轉低噪音。

OUTSTANDING FEATURES

- 1.Choice of 3 drive systems: Ring drive conveyor, zero pressure accumulator conveyor, and chain drive conveyor.
- 2.A wide variety of applications. Flexible assembly for various delivery demands.
- 3.Features of ring drive conveyor: straight, curved,branch or combine, direction changing delivery.
- 4.Features of ring drive conveyor: Flexible assembly ,low noise, and economy.
- 5.Features of zero pressure accumulator conveyor: Can be fitted with various accessories according to need. Suited for delivering various sizes of products. Built with safety devices. Simplified structure. Low noise.
- 6.Features of chain drive conveyor: Powerful driving performance, Suited for light and heavy parts delivery. Low noise running.



裝箱、裝櫃輸送系統

PACKAGING AND CONTAINER LOADING CONVEYOR SYSTEM

嚴謹設計製造的裝箱、裝櫃自動化輸送系統，提供高效率的裝箱出貨作業。此輸送系統結合無人力、自動封箱機、自動捆包機、及昇降機等，將裝箱快速送到貨櫃車內。大幅節省人力搬運，更提高工作效率展現卓越的輸送性能。

This packing and container loading conveyor system provides superior efficiency for shipment. This conveyor system consists mainly of a suction device, an automatic carton sealing machine, an automatic strapping machine, and an elevator. The package product can be fast delivered to the container loading area. This conveyor system reduces labor requirements to a minimum, and provides outstanding conveying efficiency.

鐵箱或木箱包裝輸送線

- 1.採用擱板式及鏈條式輸送機。
- 2.附有自動供棧板及自動整列包裝機構設備。
- 3.可配合昇降機快速搬運，且有二~四層自動堆疊機。
- 4.升降機均有二道以上之安全裝置確保安全。

STEEL OR WOODEN CRATE PACKAGING CONVEYOR LINE

1. Employs slat and chain conveyors.
2. Equipped with automatic pallet supply device, and automatic package orienting device.
3. Incorporated with elevator for fast delivery, and automatic stacking machine with 2-4 layer capacity.
4. The elevator is provided with over two sets of safety devices for added protection.





紙箱包裝輸送線

1. 採用滾輪式輸送機。
2. 具自動定位，自動90°轉向，自動反向功能。
3. 以連續式升降機載運至裝櫃區。
4. 升降機負載有異常狀況時，自動停止，確保安全。

PAPER CARTON CONVEYOR LINE

1. Utilizes roller conveyor.
2. The conveyor line features automatic positioning, automatic turn to 90°, and automatic reversing of package.
3. The package is lowered to the container loading area via elevator.
4. To ensure safety, the package stops in event of abnormal loading on elevator.



往復機 噴塗應用

Auto-spray machine

喬豐行股份有限公司製作的往復機應用在各行各業的製造商生產的金屬產品、塑膠產品、木器產品表面的噴塗。

Spray application of auto-spray machine:
Auto-spray machine made by Chiao Fong Hang Co., Ltd. is used in the spraying of metal products, plastic products, and wood products produced by manufacturers in various industries.

往復機提供一個完整的配置，複雜的噴塗工藝成為自動化生產線，可以提升作業效率。

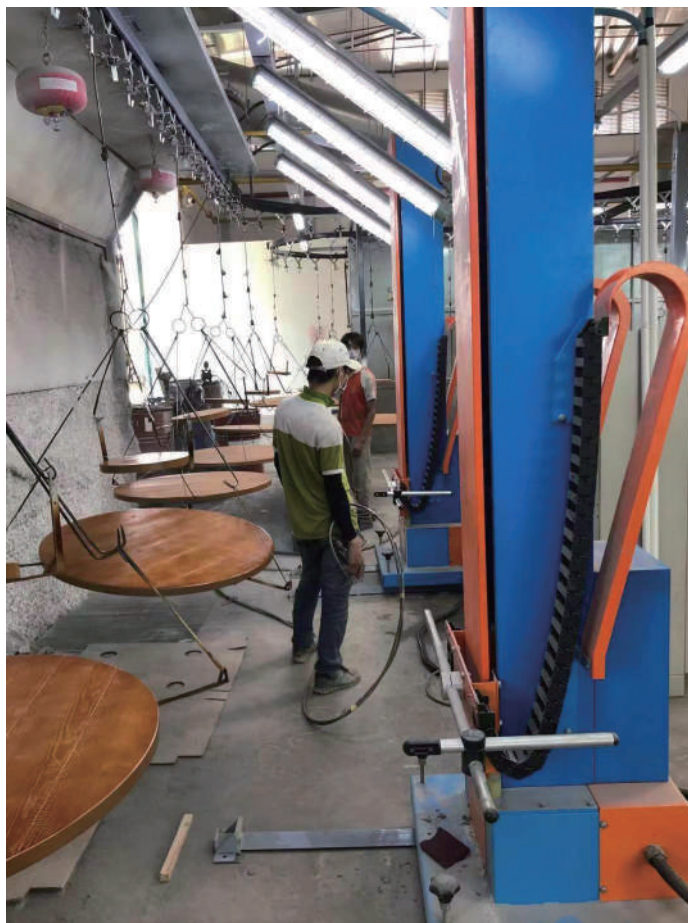
The auto-spray machine offers a complete configuration, the complex spray process becomes an automated production line and improves work efficiency.

產品優勢

- 1.耐用、簡單
- 2.輕巧、快速
- 3.降低成本,提升獲利
- 4.提高生產品質,保持最佳競爭力
- 5.避免人為作業因素的不良
- 6.解決人員短缺問題
- 7.保養成本低

Product advantages

- 1.Durable and simple
- 2.Lightweight and fast
- 3.Reduces costs and increases profitability
- 4.Improves production quality and maintains optimal competitiveness
- 5.Avoids bad human factors
- 6.Solves the problem of shortage of personnel
- 7.Low maintenance costs



其它各種輸送設備

THE OTHER CONVEYOR SYSTEMS



搬運台車 Transport Cart



塑鋼帶輸送機 PLASTIC STEEL BELT CONVEYOR



拖引台車 TOW CART



重型懸吊式組立線 Trolley Conveyor



主要產品 *MAIN PRODUCTS*

動力與無動力輸出系統

Power And Free Systems

自流式輸送系統

Free Flow Conveyor Systems

組立線輸送系統

Conveyor System For Assembly Lines

裝箱裝櫃輸送系統

Packing And Container Loading Conveyor Systems

物流輸送系統

Material Handling Systems

裙板式輸送系統

Apron & Pan Conveyors

盤式輸送機

Pallet Conveyors

懸吊式輸送機

Trolley Conveyors

擱板式輸送機

Slat Conveyors

滾輪式輸送機

Roller Conveyors

皮帶式輸送機

Belt Conveyors

斗式提運機

Bucket Elevators

輸送鏈條與滾子鏈條

Conveyor Chains & Roller Chains

喬豐行股份有限公司 **CHIAO FONG HANG CO., LTD.**

僑豐股份有限公司 **CHIAO FONG CONVEYORS CO.,LTD.**

公司：高雄市苓雅區中正一路120號15F之2

15F-2, 120 Chung Cheng 1st Rd., Kaohsiung Taiwan.

TEL: 07-7517283 · 7517227 | FAX: 07-7233983 | E-MAIL: cfhcf@ms19.hinet.net

喬豐行股份有限公司 **CHIAO FONG HANG CO., LTD.**

僑豐股份有限公司 **CHIAO FONG CONVEYORS CO.,LTD.**

工廠：高雄市大寮區萬丹路405號~407號

No. 405, 407, Wandan Rd., Daliao Dist., Kaohsiung City 831, Taiwan

TEL: 07-7816498 | FAX: 07-7823346 | E-MAIL: cfhcf@ms19.hinet.net

常州友豐機械有限公司

中國江蘇省常州市新北區薛家鎮呂墅一路三號

TEL: 0519-85103636 · 85110527 | FAX: 0519-85110171

越南辦事處

越南平陽省順安縣平準坊富平區37/7號

TEL: 84-274-3798728 | FAX: 84-274-3798727